



HEALTH PROFESSIONAL GUIDELINE

Sample Collection for Mumps PCR

August 2017

INTRODUCTION

All Mumps testing is referred to Canterbury Health Laboratories (CHL). Please refer to the CHL website, NZMN diagnostic laboratory advice and Ministry of Health website for further information:

<http://www.labnet.health.nz/testmanager/index.php>

<http://www.nzmn.org.nz/assets/NZMN/NZMN-mumps-laboratory-testing-advice.pdf>

<http://www.health.govt.nz/our-work/diseases-and-conditions/mumps>

Please note: Collection Rooms **DO NOT** take buccal, nasopharyngeal or pernasal swabs

SAMPLE REQUIRED

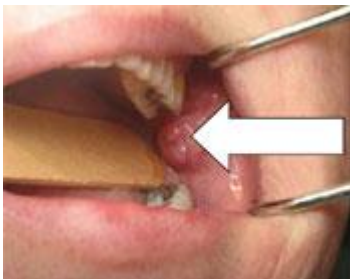
A buccal swab, ideally collected within 3 days, up to 7 days of parotitis onset is the recommended sample

MATERIALS REQUIRED

1. Use green top viral swab
2. Personal protection equipment



SAMPLE COLLECTION Buccal swab



1. The buccal area is the space near the upper rear molars between the cheek and gum. In unilateral parotitis swab the affected side
2. Massage the parotid gland area for 30 seconds prior to swabbing
3. Put the swab back into the viral swab container.
4. Label swab with first name, last name, NHI and date of birth
5. Include history of MMR vaccination and date of onset of parotitis on the request form
6. Ensure the request form is placed in the OUTSIDE pocket of the biohazard sample bag
7. Send the swab to the laboratory at room temperature